



**A U.S.D.A. INSPECTED FACILITY**  
**YOUR WILD GAME SPECIALIST FOR 50 YEARS**



**WWW.HOUSEOFSMOKEINC.COM**

**OFFICE@HOUSEOFSMOKEINC.COM**

**PH: 303.857.2750**

**825 DENVER AVE. FORT LUPTON, CO 80621**



## Handmade Sausages

CODE#	PRODUCT DESCRIPTION	PACK	AVG WEIGHT
<b>SAUSAGES-SMOKED BROTS [COOKED]</b>			
9100	BUFFALO	48/CS	4 OZ/LINK
9101	BUFFALO CHEDDAR & JALAPENO	48/CS	4 OZ/LINK
9103	ANDOUILLE	48/CS	4 OZ/LINK
9105	ANTELOPE	48/CS	4 OZ/LINK
9111	ALLIGATOR BAYOU	48/CS	4 OZ/LINK
9112	CHICKEN CHIPOTLE W/ PEACH & MANGO	48/CS	4 OZ/LINK
9115	DUCK W/ CILANTRO	48/CS	4 OZ/LINK
9116	ELK	48/CS	4 OZ/LINK
9117	ELK CHEDDAR & JALAPENO	48/CS	4 OZ/LINK
9118	ELK W/ CHEDDAR	48/CS	4 OZ/LINK
9121	PHEASANT W/ RATTLESNAKE & JALAPENO	48/CS	4 OZ/LINK
9123	RABBIT W/ RATTLESNAKE & JALAPENO	48/CS	4 OZ/LINK
9130	VENISON	48/CS	4 OZ/LINK
9131	VENISON W/ BACON & HUCKLEBERRY	48/CS	4 OZ/LINK
9140	WILD BOAR	48/CS	4 OZ/LINK
9142	WILD BOAR W/ BLUEBERRY & MERLOT	48/CS	4 OZ/LINK
9145	GERMAN BRATWURST	48/CS	4 OZ/LINK
9151	CORNEB BISON W/ SWISS CHEESE	48/CS	4 OZ/LINK
9162	PORK & BACON WITH HATCH CHILE	48/CS	4 OZ/LINK
9164	WILD BOAR, BACON, CHEDDAR & HATCH	48/CS	4 OZ/LINK
9171	MOUNTAIN MAN	48/CS	4 OZ/LINK
9190	KANGAROO	48/CS	4 OZ/LINK
9194	YAK W/ ROASTED TOMATO	48/CS	4 OZ/LINK
9198	WAGYU FRANK	24/CS	4 OZ/LINK
<b>SAUSAGES- RAW BRATS</b>			
9216	ELK	48/CS	4 OZ/LINK
9223	RABBIT RATTLESNAKE JALAPENO	48/CS	4 OZ/LINK



Made in Small  
Batches

Hickory  
Smoked





## GRINDS AND BURGERS

CODE#	PRODUCT DESCRIPTION	PACK	AVG WEIGHT
<b>GRINDS</b>			
2360	VENISON, GROUND BULK	2/CS	12 LB/CS
3360	ELK, GROUND BULK	2/CS	12 LB/CS
13626	BISON, GROUND BULK	2/CS	12 LB/CS
13820	MOUNTAIN MAN BULK	2/CS	12 LB/CS
4860	WILD BOAR, GROUND BULK	2/CS	12 LB/CS
4357	ANTELOPE GROUND BULK	2/CS	12 LB/CS
5122	ALLIGATOR, GROUND BULK	2/CS	12 LB/CS
5055	KANGAROO, GROUND BULK	2/CS	12 LB/CS
6287	OSTRICH, GROUND BULK	2/CS	12 LB/CS
6366	DUCK GROUND BULK	2/CS	12 LB/CS
4960	RABBIT, GROUND BULK	2/CS	12 LB/CS
4759	YAK W/BEEF, GROUND BULK	2/CS	12 LB/CS
4766	YAK GROUND RETAIL PACKS	10 LB/CS	1 LB EA
4402	CAMEL GROUND RETAIL	10 LB/CS	1 LB EA
<b>ELK BURGERS</b>			
3365	3:1 ROUND	10 LB/CS	5.3 OZ EA
3684	3:1 CHOPPED STEAK ROUND	10 LB/CS	5.3 OZ EA
<b>BISON BURGERS</b>			
13608	2:1 ROUND	12 LB/CS	8 OZ EA
13653	3:1 ROUND	10 LB/CS	5.3 OZ EA
13604	4:1 ROUND	12 LB/CS	4 OZ EA
13602	8:1 ROUND SLIDER	10 LB/CS	2 OZ EA
13721	2:1 ROUND BUFFALO/BEEF 75/25	12 LB/CS	8 OZ EA
13731	3:1 ROUND BUFFALO/BEEF 75/25	10 LB/CS	5.3 OZ EA
<b>ALLIGATOR BURGER</b>			
5124	ALLIGATOR 3:1 ROUND	10 LB/CS	5.3 OZ EA
<b>MOUNTAIN MAN BLEND [ELK, VENISON, ANTELOPE, WILD BOAR, BUFFALO]</b>			
13831	MOUNTAIN MAN PATTIES 3:1	10 LB/CS	5.3 OZ EA
<b>WILD BOAR BURGER WITH BACON, HOT HATCH CHILE AND CHEDDAR</b>			
13942	WILD BOAR 3:1	10 LB/CS	5.3 OZ EA





### Mountain Man: Bison, Elk, Venison, Wild Boar, Antelope

CODE#	PRODUCT DESCRIPTION	PACK	AVG WEIGHT
<b>MOUNTAIN MAN BLEND [ELK, VENISON, ANTELOPE, WILD BOAR, BUFFALO]</b>			
13820	MOUNTAIN MAN BULK	2/CS	12 LB/CS
13831	MOUNTAIN MAN PATTIES 3:1	10 LB/CS	5.3 OZ EA



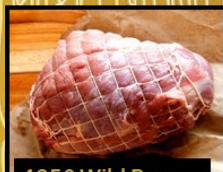
### Bacon and Breakfast Sausage

CODE#	PRODUCT DESCRIPTION	PACK	AVG WEIGHT
<b>BACON</b>			
7544	PORK SLAB DOUBLE SMOKED	4/CS	5-6 LB EA
<b>BREAKFAST SAUSAGES</b>			
9019	WILD BOAR WITH SAGE	10/CS	1 LB CHUB
9045	WILD BOAR WITH MAPLE	10/CS	1 LB CHUB
9046	BISON WITH MAPLE	10/CS	1 LB CHUB
<b>LITTLE SMOKIES- SMOKED SAUSAGES [2 OZ/LINK]</b>			
9051	ELK	1 LB/BG	12 LB/CS
9052	WILD BOAR	1 LB/BG	12 LB/CS
9053	RABBIT/RATTLE/JALAPENO	1 LB/BG	12 LB/CS



### Wild Boar

CODE#	PRODUCT DESCRIPTION	PACK	AVG WEIGHT
<b>WILD BOAR [TEXAS FERAL SWINE]</b>			
4810	OSSO BUCO	20 LB/CS	4-6 OZ EA
4811	LOIN BONELESS	10 LB/CS	2-3 LB EA
4817	TENDERLOIN	8-12 LB/CS	8-10 OZ EA
4825	FRENCH RACK 8-10 BONE	4/CS	3-4 LB EA
4835	STEW MEAT	2/CS	10 LB/CS
4841	ST. LOUIS RIBS	20 LB/CS	1 LB AVG EA
4850	SHOULDER ROAST BONELESS	4/CS	4-5 LB EA
4860	GROUND BULK	2/CS	12 LB/CS



4850 Wild Boar  
Shoulder Roast



4841 Wild Boar  
St. Louis Ribs



4810 Wild Boar  
Osso Bucco





## VENISON & ELK

CODE#	PRODUCT DESCRIPTION	PACK	AVG WEIGHT
<b>VENISON, NEW ZEALAND, CERVENA RED DEER</b>			
2033	DENVER LEG BONELESS	2/CS	4 LB AVG/EA
2035	DENVER LEG FILET BONELESS	8/CS	1.5 LB AVG/EA
2100	SADDLE BONE IN (LOIN & TENDER)	3/CS	15 LB AVG/EA
2101	FRENCH RACK 8 BONE	2-4/CS	1.5-2 LB EA
2103	FRENCH RACK 2 BONE	.5 LB EA	24/CS
2109	SHORTLOIN BNLS/DENUDED	1.5-2 LB EA	15-20 LB/CS
2110	STRIPLOIN TTS	4.5-5.5 LB EA	18-25 LB/CS
2116	SHORT RIB, 6-7 BONE	7-8/CS	12-18 LB/CS
2117	OSSO BUCO	15-20 LB/CS	8-10 OZ EA
2189	FLANK STEAK	10/CS	20 LB/CS
2350	STEW MEAT	2/CS	10 LB/CS
2360	GROUND BULK	2/CS	12 LB/CS
2410	MEDALLION	4 OZ EA	10 LB/CS
2890	TENDERLOIN WHOLE	1 LB/EA AVG	10 LB/CS



3033 Elk Denver Leg



2103 Venison  
2-Bone Chop



2101 Venison  
8-Bone Rack

CODE#	PRODUCT DESCRIPTION	PACK	AVG WEIGHT
<b>ELK, NEW ZEALAND WAPITI</b>			
3033	DENVER LEG BONELESS	2/CS	4.5-5.5 LB EA
3101	FRENCH RACK 8 BONE	2-4/CS	2.5-3.5 LB EA
3105	T-BONE	16/CS	8 OZ EA
3109	SHORTLOIN BNLS/DENUDED	8/CS	2 LB/EA
3771	OSSO BUCO		
3128	RIBEYE	3-4/CS	15-20 LB/CS
3160	CHUCK ROAST BONELESS	2/CS	7-8 LB EA
3350	STEW MEAT	2/CS	10 LB/CS
3360	GROUND BULK	2/CS	12 LB/CS
3410	MEDALLION	10 LB/CS	4 OZ EA
3488	BUTT TENDERLOIN	12 LB/CS	7 OZ AVG/PC
3489	TENDERLOIN WHOLE	14 LB/CS	18-24 OZ EA
3661	TRIM	50-60 LB/CS	

CODE#	PRODUCT DESCRIPTION	PACK	AVG WEIGHT
ELK	NORTH AMERICAN FARM RAISED	PLEASE CALL FOR AVAILABILITY	
3604	MEDALLIONS	10 LB/CS	4 OZ EA
3615	FRENCH RACK 8 BONE	2-4/CS	4.5-5.5 LB EA
3617	OSSO BUCCO	12 LB/CS	
3622	STRIPLOIN	4-5 LB EA	12-13 LB/CS
3628	RIBEYE BONELESS	2/CS	10 LB/CS
3633	DENVER LEG BONELESS	4/CS	15-20 LB/CS
3689	TENDERLOINS	5-6/CS	2-3 LB EA
3693	FLANK	15 LB/CS	3-5 LB EA
368408	SIRLOIN STEAKS	10 LB/CS	8 OZ EA



## Bison

CODE#	PRODUCT DESCRIPTION	PACK	AVG WEIGHT
BISON	NORTH AMERICAN	PLEASE CALL FOR AVAILABILITY	
1091	EXPORT RIB 2X2 BONE IN	2/CS	16-20 LB EA
1121	RIBEYE LIP-ON 2X2 BONELESS	2/CS	8-10 LB EA
1140	SHOULDER CLOD	18-20 LB/CS	
1161	SHOULDER CHUCK ROLL	2/CS	15-18 LB EA
1162	CHUCK TENDERS	3/CS	5 LB EA
1163	TERES MAJOR	10 LB/CS	1.5-2 LB EA
1201	BRISKET	3/CS	5-7 LB EA
1210	INSIDE SKIRTS	4/CS	10 LB/CS
1231	SHORT RIBS, 2 INCH X 3 BONE	16/CS	15-20 LB/CS
1241	BACK RIBS	4/CS	4-5 LB EA
1601	STEAMSHIP ROUND/BARON	1/CS	40-55 LB EA
1681	TOP ROUND/INSIDE	1/CS	15-18 LB EA
1711	EYE OF ROUND	3/CS	3-4 LB EA
1811	STRIPLOIN 1X1 BONELESS	2/CS	7-10 LB EA
18111	TOMAHAWK, CHECK FOR SIZES AND AVAILABILITY		
1841	TOP BUTT BONELESS	2/CS	6-9 LB EA



10914 Bison  
Cowboy Steak



1231 Bison Short  
Rib



1991 Bison Split  
Femur



CODE#	PRODUCT DESCRIPTION	PACK	AVG WEIGHT
<b>BISON CONTINUED</b>			
1850	TRI TIP	20 LB/CS	
1891	TENDERLOIN PSMO	2/CS	4-6 LB EA
1931	FLANK STEAK	10 LB/CS	1-2 LB EA
1935	OSSO BUCO	1 LB EA	16 LB/CS
1991	SPLIT FEMUR BONE	8"-10" EA	30 LB/CS
1993	BULL FRIES	20 LB/CS	
1998	TONGUE	20 LB/CS	1.5-2 LB EA
13525	STEW MEAT	10 LB/CS	
19305	HANGING TENDERS	12 LB/CS	1.5 LB AVG EA
10914	B/IN COWBOY STEAK	16-18 OZ EA	10/CS
11212	RIBEYE LIP-ON STEAK	12 OZ EA	16/CS
13626	GROUND BULK	2/CS	12 LB/CS
15805	MEDALLION	4 OZ EA	40/CS
18409	TOP SIRLOIN STEAK CENTER CUT	8 OZ EA	20/CS
18110	N.Y. STRIP STEAK	10 OZ EA	16/CS
<b>BISON FURTHER PROCESSED</b>			
7432	ROAST	10 LB/CS	4-5 LB EA
7434P	CARPACCIO (COLD SMOKED)	12 LB/CS	4-6 LB EA
7701	BUFFALO CHILI W/BLACK BEANS	3/CS	21 LB/CS
7752	PASTRAMI	12 LB/CS	3-4 LB EA
7755	CORNEE EYE	10-12 LB/CS	2-4 LB EA



## Wild Game and More

CODE#	PRODUCT DESCRIPTION	PACK	AVG WEIGHT
<b>ALLIGATOR, LOUISIANA</b>			
5122	GROUND	2/CS	12 LB/CS
5124	BURGER, 3:1 ROUND	10 LB/CS	5.3 OZ EA
5125	BODY MEAT	2/CS	10 LB/CS
5150	TAIL MEAT	2/CS	10 LB/CS
<b>ANTELOPE</b>			
4333	DENVER LEG BONELESS	5 PC/CS	20 LB/CS
<b>CAPON</b>			
6090	WHOLE BIRD	6/CS	7-9 LB EA
<b>CAMEL</b>			
4402	GROUND RETAIL PACKED	10 LB/CS	1 LB EA
<b>CHICKEN FURTHER PROCESSED</b>			
7209	WHOLE SMOKED	6/CS	2.5-3 LB EA
7214	BREAST SMKD BNLS/SKNLS CAJUN	12 LB/CS	6-7 OZ EA



6320 Duck Eggs



7251 Smoked  
Duck Breast



6368 Foie Gras  
Nuggets

CODE#	PRODUCT DESCRIPTION	PACK	AVG WEIGHT
<b>DUCK</b>			
6301	WHOLE, MOULARD	1/CASE	7 LB EA
6320	DUCK EGGS	20/CS	
6355	BREAST BONELESS, MOULARD	20 LB/CS	1.5-2 LB EA
6360	LEG & THIGH, MOULARD	20 LB/CS	8-12 OZ EA
6366	GROUND	2/CS	12 LB/CS
6368	FOIE NUGGETS	1/CS	1 LB EA
6370	BACON, SLICED	8 OZ/PACK	6 LB/CS
6375	LIVERS	5 LB/CS	
6376	DUCK WING DRUMETTES, MOULARD	20 LB/CS	
6391	DUCK FAT RENDERED	1/CS	7 LB BUCKET
6398	FOIE GRAS GRADE A FROZEN	2/CS	1.5-2 LB EA
6397	FOIE GRAS GRADE B FROZEN	2/CS	1 LB & UP EA
6399	STOCK BONES	25 LB/CS	
<b>DUCK FURTHER PROCESSED</b>			
7245	PEKIN WHOLE SMOKED	6/CS	4-5 LB EA
7251	BONELESS BREAST SMOKED	12 LB/CS	10-13 OZ EA



5305 Frog Legs



6500 Guinea Hen

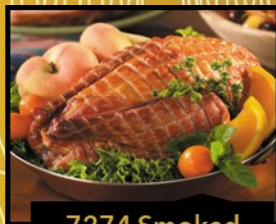


6355 Moulard  
Duck Breast Bnls.

CODE#	PRODUCT DESCRIPTION	PACK	AVG WEIGHT
<b>FROG LEGS</b>			
5305	4-6 PAIR PER POUND	5 LB/CS	
<b>GOAT</b>			
5575	NZ WHOLE GOAT 6 PC	6 PC/CS	25-40 LB/CS
<b>GOOSE PLEASE CALL FOR AVAILABILITY</b>			
6400	WHOLE GRADE A	4/CS	10-12 LB EA
<b>GUINEA HEN</b>			
6500	WHOLE	8/CS	2.5-3 LB EA



CODE#	PRODUCT DESCRIPTION	PACK	AVG WEIGHT
<b>HAM</b>			
7335	TASSO HAM	10 LB/CS	1-1.5 LB EA
7336	HAM BONELESS NATURAL	2/CS	5-7 LB EA
7338	HAM WHOLE BONE IN	1/CS	15 LB EA
7351	HAM SHANK SMOKED	25 LB/CS	1.75-2 LB EA
<b>KANGAROO, AUSTRALIAN [CHECK AVAILABILITY]</b>			
5000	LEG DENVER BONELESS	23-25 LB/CS	
5010	STRIPLOIN BONELESS	13.23 LB/CS	2 LB EA
5055	GROUND BULK	2/CS	12 LB/CS
<b>OSTRICH</b>			
6271	FILET STEAK	12 LB/CS	8 OZ EA
<b>PHEASANT</b>			
6606	WHOLE BONE IN OVEN READY	8/CS	3 LB & UP
6650	BREAST BONELESS	18-22 LB/CS	8-10 OZ EA
6655	BREAST BONELESS AIRLINE	18-22 LB/CS	8-10 OZ EA
<b>PHEASANT FURTHER PROCESSED</b>			
7274	SMOKED WHOLE	6/CS	2.5-3 LB EA
<b>PORK PLEASE CONTACT US FOR YOUR PREMIUM PORK NEEDS</b>			
<u>KUROBUTA</u>			
4735	PICNICS BONELESS	4/CS	25 LB/CS
<u>OTHER</u>			
4520	NECK BONES	30 LB/CS	
<b>QUAIL</b>			
6005	SEMI-BONELESS COTURNIX	24/CS	3.5 OZ EA AVG



7274 Smoked Pheasant



6005 Semi-Boneless Quail

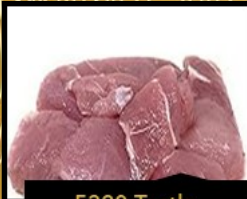


5010 Kangaroo Loin

CODE#	PRODUCT DESCRIPTION	PACK	AVG WEIGHT
<b>RABBIT</b>			
4900	WHOLE BONE IN	12/CS	2.5-3 LB EA
4925	HIND QUARTERS BONE IN	20 LB/CS	5-6 OZ EA
49305	LOIN BONELESS FLAP OFF	22 LB/CS	4 OZ EA
4960	GROUND	2/CS	12 LB/CS
4995	TRIM	20 LB/CS	



5444 Coastal  
Huckleberries



5320 Turtle  
Boneless



5210 Rattlesnake  
Whole

CODE#	PRODUCT DESCRIPTION	PACK	AVG WEIGHT
<b>RATTLESNAKE, USA</b>			
5210	LARGE, SIZES CAN VARY	1.5-3 LB EA	10 LB/CS
<b>SNAPPING TURTLE, FRESH WATER</b>			
5320	BONELESS	2 LB/BAG	1 BAG/CS
<b>SQUAB</b>			
6075	SEMI-BONELESS	16/CS	10-12 OZ EA
<b>TURKEY</b>			
7102	SMOKED WHOLE	4/CS	10-12 LB EA
7110	BONELESS BREAST SMOKED	2/CS	6-7 LB EA
7125	DRUMSTICK ROASTED	25/CS	16-24 OZ EA
7125ACS	TURKEY LEGS RAW	30 LB/CS	20-28 OZ EA
<b>YAK, HIMALAYAN BEEF CHECK AVAILABILITY</b>			
4780	STRIPLOIN, WHOLE	2/CS	7-9 LB EA
4759	GROUND W/BEEF	2/CS	12 LB/CS
4770	RIBEYE, WHOLE, BONELESS	2/CS	7-9 LB EA
4766	GROUND RETAIL PACKS	10 LB/CS	1 LB EA
4790	YAK TENDEROIN	2/CS	2-3 LB EA
<b>SPECIALTY ITEMS</b>			
5410	ROCKY MTN OYSTERS SLICED & BREADED	6-8 PCS/LB	10 LB/CS
5444	HUCKLEBERRIES, WILD FROZEN	1/CS	5 LB/CS
7701	BUFFALO CHILI W/BLACK BEANS	3/CS	21 LB/CS



7701 Bison Black  
Bean Chili



5410 Rocky  
Mountain Oysters



4900 Rabbit Whole

[WWW.HOUSEOFSMOKEINC.COM](http://WWW.HOUSEOFSMOKEINC.COM)





## Summer Sausage



## Jerky Made From Whole Muscle

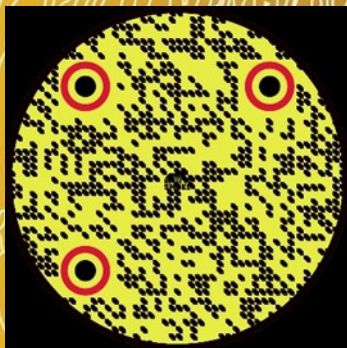
CODE#	PRODUCT DESCRIPTION	PACK	AVG WEIGHT
<b>SMOKED SAUSAGE [BEER STICKS] 1 OZ PER STICK</b>			
9410	BEEF SAUSAGE STICKS	3/PACK	20/CS
9420	BUFFALO SAUSAGE STICKS	3/PACK	20/CS
9430	ELK SAUSAGE STICKS	3/PACK	20/CS
<b>SMOKED SUMMER SAUSAGE</b>			
9300	BEEF	24/CS	6 OZ CHUB
9315	VENISON	24/CS	6 OZ CHUB
9318	ELK	24/CS	6 OZ CHUB
9320	BUFFALO	24/CS	6 OZ CHUB
9375	MOUNTAIN MAN	24/CS	6 OZ CHUB
9380	WILD BOAR	24/CS	6 OZ CHUB
9350	BEEF	10/CS	1 LB CHUB
9330	VENISON	10/CS	1 LB CHUB
9335	ELK	10/CS	1 LB CHUB
9325	BUFFALO	10/CS	1 LB CHUB
9378	MOUNTAIN MAN	10/CS	1 LB CHUB
9385	WILD BOAR	10/CS	1 LB CHUB
9345	NORWEGIAN	10/CS	1 LB CHUB
<b>BEEF JERKY</b>			
9751	BEEF	40/CS	1 OZ EA
9752	BEEF HOT	40/CS	1 OZ EA
9762	BEEF PEPPERED	40/CS	1 OZ EA
9753	BEEF	12/CS	4 OZ EA
9754	BEEF HOT	12/CS	4 OZ EA
9761	BEEF TERIYAKI W/ PEPPERS	12/CS	4 OZ EA
9763	BEEF PEPPERED	12/CS	4 OZ EA
<b>BUFFALO JERKY</b>			
9710	BUFFALO JERKY	40/CS	1 OZ EA
9711	BUFFALO JERKY HOT	40/CS	1 OZ EA
9715	BUFFALO JERKY	12/CS	3 OZ EA
9716	BUFFALO JERKY HOT	12/CS	3 OZ EA
<b>GAME MEAT JERKY</b>			
9740	ELK	40/CS	1 OZ EA
9741	ELK HOT	40/CS	1 OZ EA
9730	VENISON	40/CS	1 OZ EA
9731	VENISON HOT	40/CS	1 OZ EA
9745	ELK	12/CS	3 OZ EA
9746	ELK HOT	12/CS	3 OZ EA
9735	VENISON	12/CS	3 OZ EA
9736	VENISON HOT	12/CS	3 OZ EA

# NATURALLY WILD PET TREATS



CODE#	PRODUCT DESCRIPTION	PACK	AVG WEIGHT
<b>PET STICKS 3 PACK</b>			
86721	BISON	3 PC/PACK	10 PACKS/CS
86722	ELK	3 PC/PACK	10 PACKS/CS
86727	BEEF	3 PC/PACK	10 PACKS/CS
86728	VENISON	3 PC/PACK	10 PACKS/CS
<b>PET STICK 10 PACK</b>			
86751	BISON	10 PC/PACK	10 PACKS/CS
86752	ELK	10 PC/PACK	10 PACKS/CS
86757	BEEF	10 PC/PACK	10 PACKS/CS
76758	VENISON	10 PC/PACK	10 PACKS/CS

Naturally Wild Pet Sticks and Bits are made with whole muscle, liver, heart, and ground bone. Our treats give your pet that Naturally Wild diet without the fillers and unwanted additives. Naturally Wild offers a healthy selection of bones, treats and raw food options.



**SCAN TO VISIT OUR WEBSITE**